

ARMONIA
Country

Welcome to Armonia, a thriving
new residence on Fulham Road,
just meters away from the shops, restaurants
and amenities of Chelsea and Kensington.

ARMONIA
Court



Elegance & Heritage

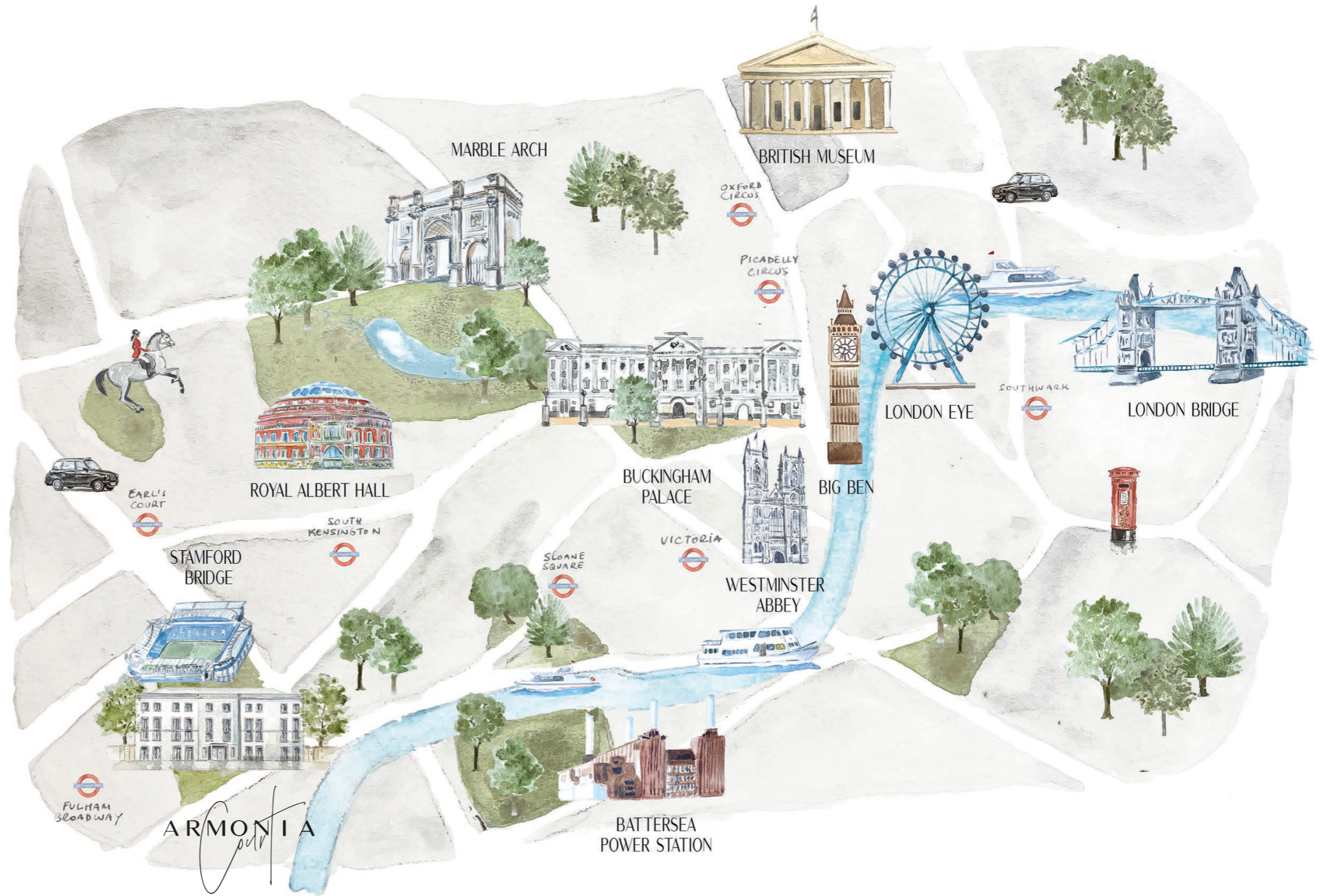
This marvellous development features elegant architecture combined with the rich heritage of the site. It offers modern accommodation designed in different combinations of maisonettes or double aspect apartments.

With the incredible variety of facilities, from shopping high street to peaceful green space and excellent transport links, all available on your doorstep, Armonia is London's most exciting West End destination





A moment to Central London





Clapham Common

Dulwich College

Battersea Park Children's Zoo

Chelsea Physic Garden

Canary Wharf

ARMONIA

The Shard

Kings Road

Tower Bridge

Westminster

Big Ben

London Eye

Buckingham Palace

Harrods

The British Museum

Victoria & Albert Museum

Fulham & Chelsea

The residence is strategically located on the North side of Fulham Road, with the Chelsea Football Stadium to the rear and Fulham Broadway, with the Tube Station for the District Line, on a 2 minutes walk. Several bus lines go through Fulham Road and will take you to Central London in about 15 minutes



KENSINGTON

POST OFFICE
5 MINUTES

HOSPITAL
1 MINUTES

TESCO EXPRESS
5 MINUTES

CHELSEA

CHELSEA
FOOTBALL
STADIUM
2 MINUTES

ARMONIA

NEW KING'S ROAD
6 MINUTES

LOTS ROAD MARKET
8 MINUTES

FULHAM

THE LONDON
ORATORY SCHOOL
10 MINUTES

SAINSBURY'S
3 MINUTES

FULHAM BROADWAY ST.
2 MINUTES

BUS STOP
2 MINUTES

EEL BROOK COMMON
4 MINUTES

35 mins



30 mins



30 mins



30 mins



20 mins



36 mins



45 mins



39 mins



59 mins



*A place
of learning*

A renowned centre for academic excellence, London has some of the most famous and successful universities in the world. Great institutions like University College London and Imperial College London appear in the Top Ten of QS World University Rankings 2020-2021. Early years schools are also nearby, most notably Kensington Wade, the first Prep school in the UK to offer an immersive English and Chinese education.

Just Relax
on your Doorstep



Green, Green & Green

The spaces in between buildings are just as important as the buildings themselves, which is why there is an abundance of outdoor space for residents to enjoy.

Green space is also within easy reach, with Eel Brook Common, Westfield Park, Bishops Park and the famous Battersea Park all close by.





Walking along the River

You will be perfectly positioned to enjoy the best of life in the Capital, meaning there is never a lack of things to do. Just a short walk along the towpath, with views on the Thames, you'll find yourself amongst some of London's most iconic landmarks.

Eat, Drink & Meet

From coffee and croissants to cocktails by candlelight, Chelsea's bars, eateries and quaint cafés mean whatever the occasion, and whoever the company, the perfect spot is a short stroll from your front door.





Easy access to Amenities

The beauty of Armonia is that while it offers direct access to the city, it's also an exciting destination with everything you need just minutes from your front door.

When it comes to shopping, really you are spoiled for choice as you stroll through the boutiques of the vibrant Kings Road

Comfort Living Apartments

The brand new, modern development is designed to offer instant access to the neighbourhood's amenities while maintaining a sense of comfort and privacy.

Each individual apartment is perfectly proportioned, with the idea to create a bright, airy environment for every room.

Natural light, large windows and neutral, calming colours are scattered everywhere through the apartments.

The modern and comfortable décor helps create the perfect, inviting living environment. The development has been designed to offer a secure and quiet environment whilst being situated in a lively, central location.

The apartments are enriched by high quality fittings. Every unit is upgraded with an Italian kitchen, designed and imported specifically for this project.

The full height wardrobes come also from Italy, with a strong character, long durability and a stylish taste.





Calming colours





Natural Light



*Five levels
of comfort*

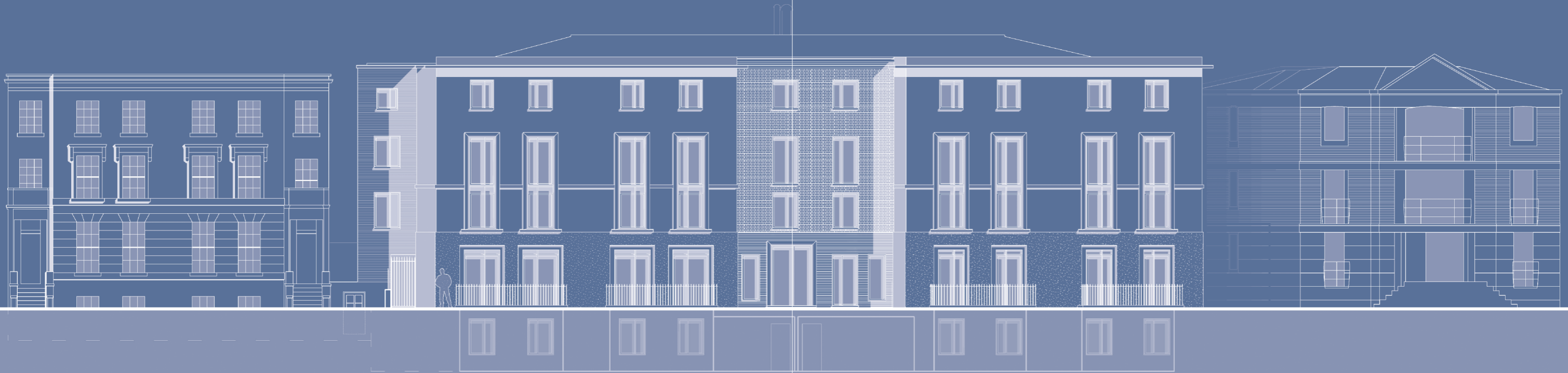
30 APARTMENTS

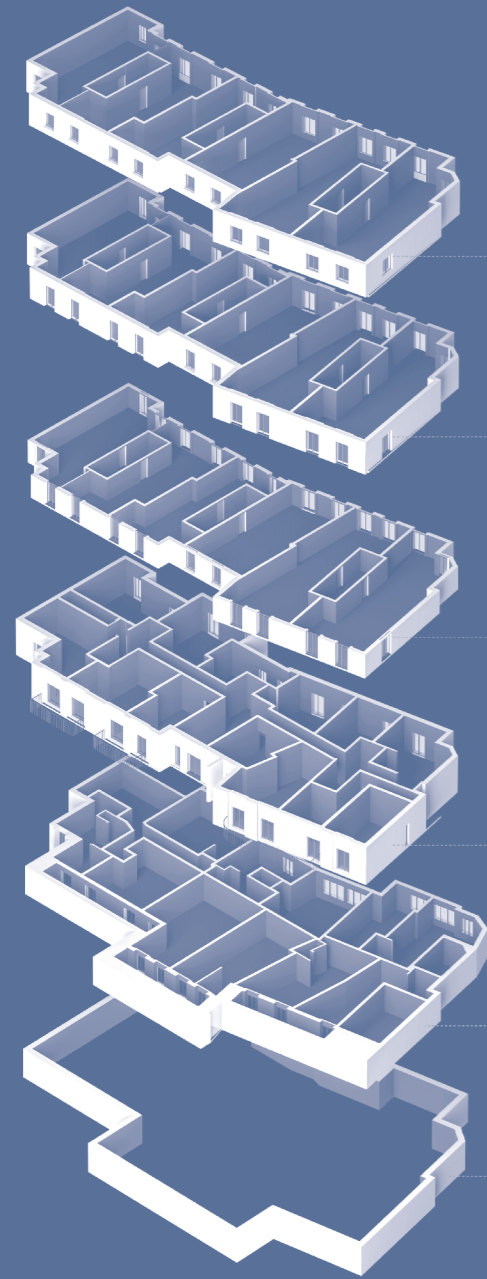
1 BEDROOM
FLAT
3 UNITS

2 BEDROOM
FLAT
15 UNITS

1 BEDROOM
MAISONNETTES
3 UNITS

2 BEDROOM
MAISONNETTES
9 UNITS





THIRD FLOOR

SECOND FLOOR

FIRST FLOOR

GROUND FLOOR

LOWER GROUND FLOOR

RESIDENTS CAR PARKING





FLAT I
MAISONETTE
WEST CORE



Ground Floor



Lower Ground Floor

	m2	ft2
Kitchen/ Dining/ Living Room	34,22	368,34
Master Bedroom	17,24	185,56
Double Bedroom	15,26	164,25
GIA (Gross Internal Area)	80,60	867,57

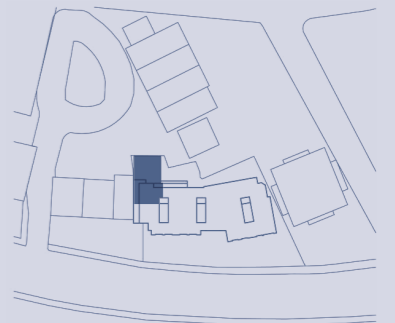
NORTH



ARMONIA COURT



FLAT I
MAISONETTE
WEST CORE



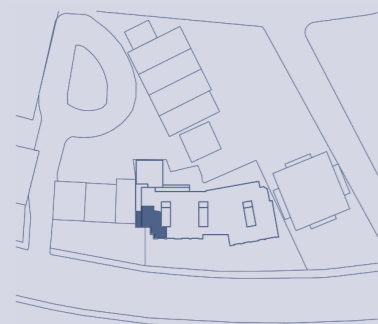


FLAT 2
MAISONETTE

WEST CORE



Ground Floor



Lower Ground Floor

	m2	ft2
Kitchen/ Dining/ Living Room	32,36	348,32
Single Bedroom	9,32	100,31
Master Bedroom	12,76	137,34
GIA (Gross Internal Area)	67,50	726,564

NORTH



ARMONIA COURT



FLAT 3
MAISONETTE

WEST CORE



Ground Floor



Lower Ground Floor

	m2	ft2
Kitchen/ Dining/ Living Room	34,59	372,32
Master Bedroom	13,96	150,26
Double Bedroom	13,64	146,81
GIA (Gross Internal Area)	82,31	885,97

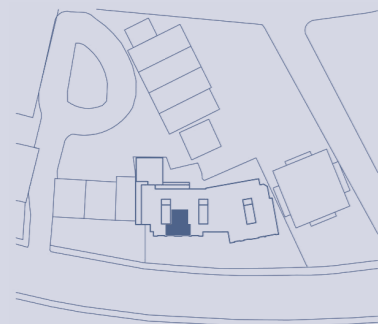
NORTH



ARMONIA COURT



FLAT 4
MAISONETTE
WEST CORE



FLAT 4
MAISONETTE
WEST CORE



Ground Floor



Lower
Ground Floor

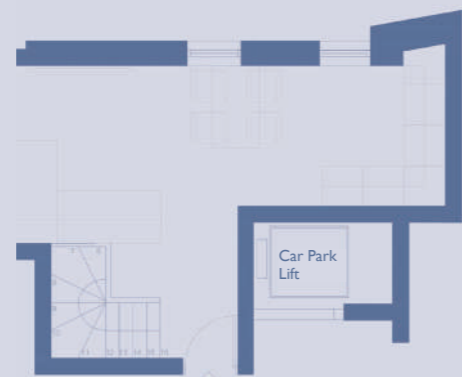
	m2	ft2
Kitchen/ Dining/ Living Room	30,68	330,23
Single Bedroom	10,89	117,21
Master Bedroom	11,32	121,84
GIA (Gross Internal Area)	67,50	800,29

NORTH





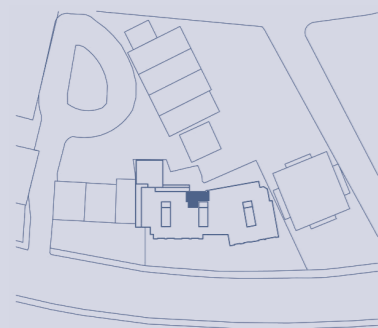
FLAT 5
MAISONETTE
CENTRAL CORE



Ground Floor



Lower
Ground Floor



	m2	ft2
Kitchen/ Dining/ Living Room	18,49	199,02
Master Bedroom	16,39	176,42
GIA (Gross Internal Area)	82,31	885,97

NORTH



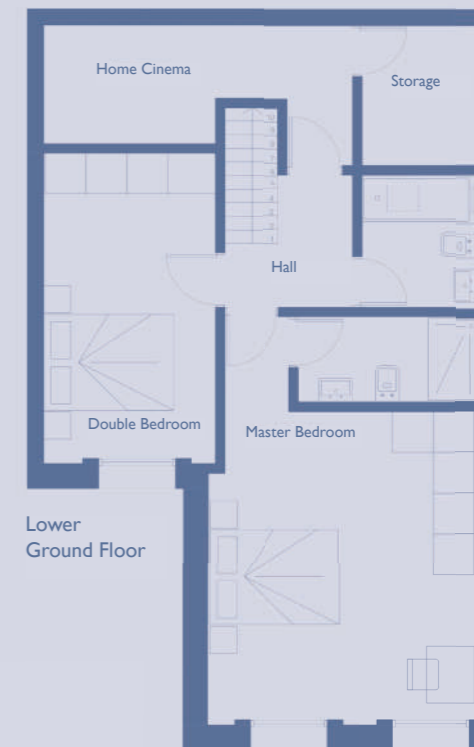
ARMONIA COURT



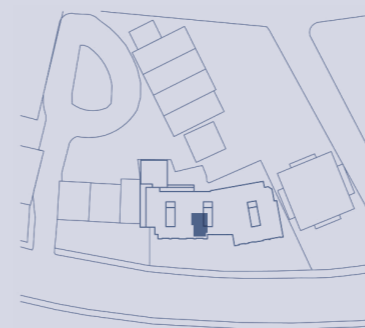
FLAT 6
MAISONETTE
CENTRAL CORE



Ground Floor



Lower
Ground Floor



	m2	ft2
Kitchen/ Dining/ Living Room	22,43	241,43
Double Bedroom	11,49	123,67
Master Bedroom	19,13	205,91
Home cinema	7,55	81,26
GIA (Gross Internal Area)	84,67	911,38

NORTH



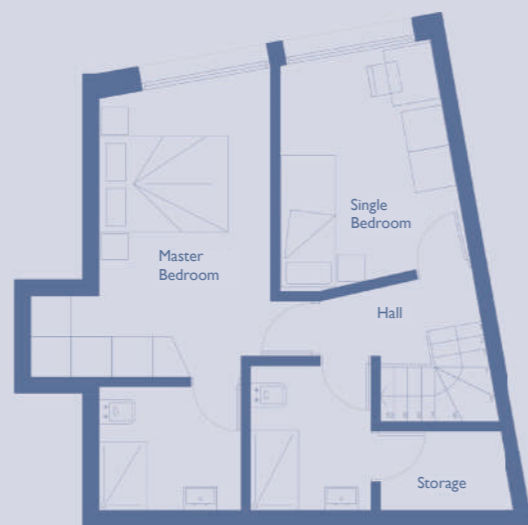
ARMONIA COURT



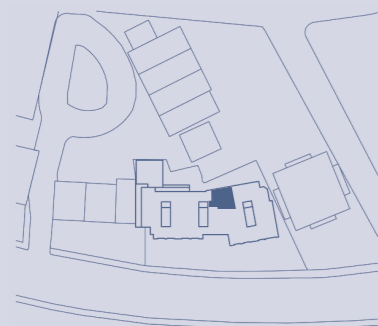
FLAT 7
MAISONETTE
CENTRAL CORE



Ground Floor



Lower
Ground Floor



	m2	ft2
Kitchen/ Dining/ Living Room	24,58	264,57
Single Bedroom	8,43	90,73
Master Bedroom	11,98	128,95
GIA (Gross Internal Area)	65,41	704,06

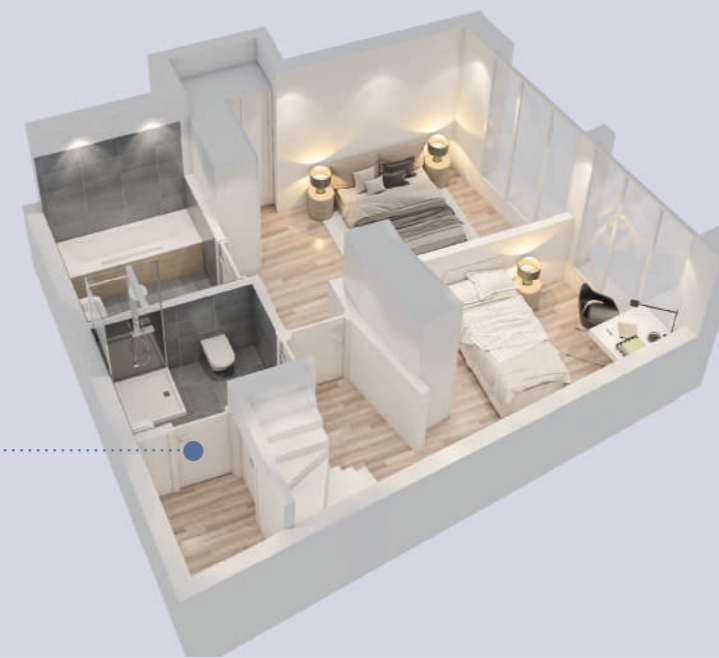
NORTH



ARMONIA COURT



FLAT 7
MAISONETTE
CENTRAL CORE

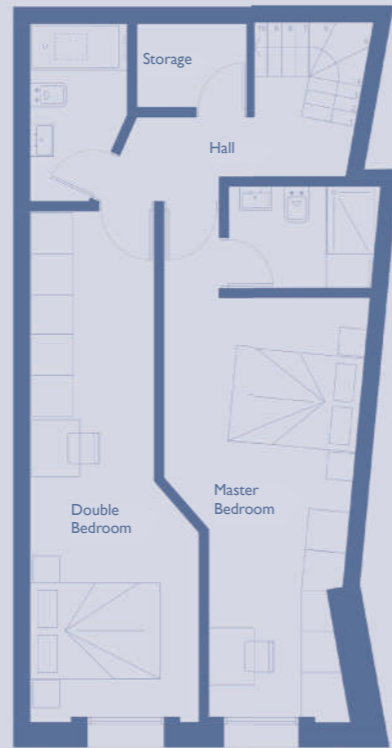




FLAT 8
MAISONETTE
CENTRAL CORE



Ground Floor



Lower Ground Floor

	m2	ft2
Kitchen/ Dining/ Living Room	20,41	219,69
Double Bedroom	15,81	170,17
Master Bedroom	16,11	173,40
GIA (Gross Internal Area)	75,10	808,36

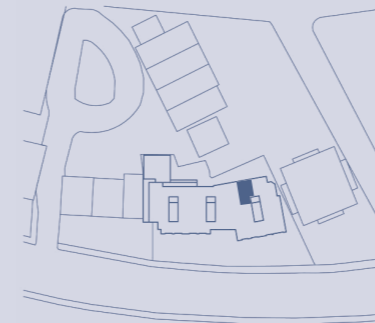
NORTH



ARMONIA COURT



FLAT 9
MAISONETTE
EAST CORE



Ground Floor



Lower Ground Floor

	m2	ft2
Kitchen/ Dining/ Living Room	19,22	206,88
Master Bedroom	14,37	154,67
GIA (Gross Internal Area)	54,04	581,68

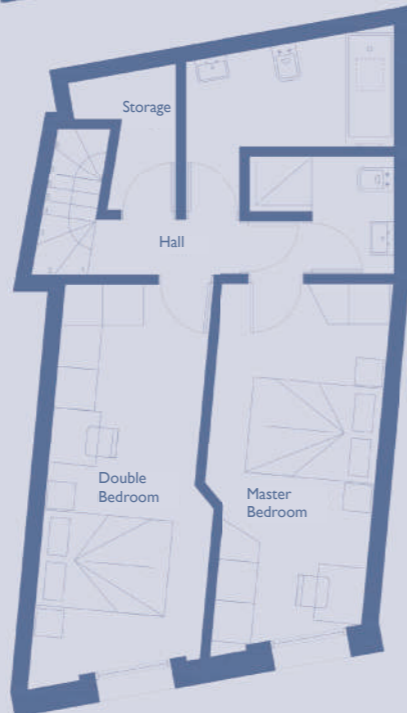
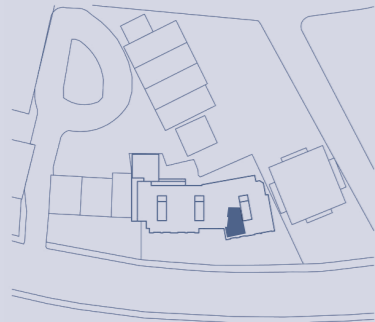
NORTH



ARMONIA COURT



FLAT 10
MAISONETTE
EAST CORE



Ground Floor

Lower
Ground Floor

NORTH



ARMONIA COURT



FLAT 10
MAISONETTE
EAST CORE

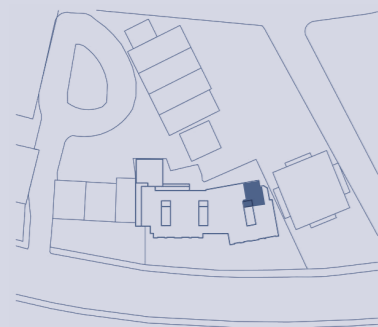


	m2	ft2
Kitchen/ Dining/ Living Room	31,81	342,39
Double Bedroom	13,32	143,37
Master Bedroom	12,45	134,01
GIA (Gross Internal Area)	81,49	877,15



FLAT 11
MAISONETTE

EAST CORE



Ground Floor



Lower
Ground Floor

	m2	ft2
Kitchen/ Dining/ Living Room	23,04	248,00
Single Bedroom	9,36	100,75
Master Bedroom	12,86	138,42
GIA (Gross Internal Area)	62,61	673,92

NORTH

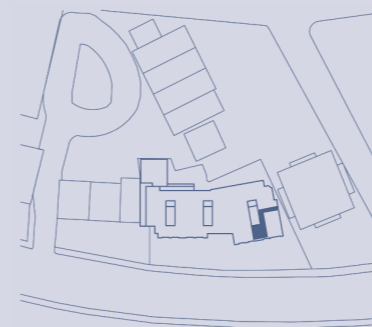


ARMONIA COURT



FLAT 12
MAISONETTE

EAST CORE



Ground Floor



Lower
Ground Floor

	m2	ft2
Kitchen/ Dining/ Living Room	19,67	211,72
Double Bedroom	20,76	223,45
GIA (Gross Internal Area)	58,49	629,58

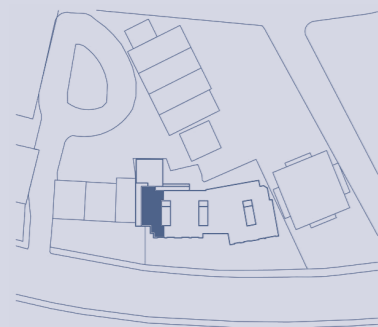
NORTH



ARMONIA COURT

1

FLAT 13
FIRST FLOOR
WEST CORE



	m2	ft2
Kitchen/ Dining/ Living Room	32,14	345,95
Single Bedroom	9,10	97,95
Master Bedroom	11,92	128,30
GIA (Gross Internal Area)	62,17	669,19

NORTH



ARMONIA COURT

1

FLAT 13
FIRST FLOOR
WEST CORE



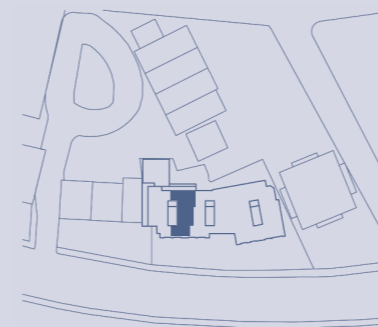
1

FLAT 14
FIRST FLOOR
WEST CORE



1

FLAT 14
FIRST FLOOR
WEST CORE



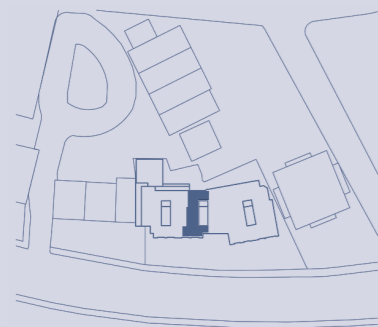
	m2	ft2
Kitchen/ Dining/ Living Room	30,11	342,10
Double Bedroom	7,42	79,86
Master Bedroom	14,16	152,41
GIA (Gross Internal Area)	63,77	686,41

NORTH



1

FLAT 15
FIRST FLOOR
CENTRAL CORE

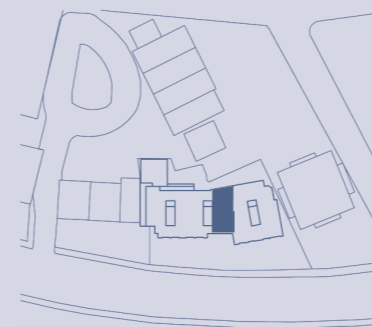


	m2	ft2
Kitchen/ Dining/ Living Room	28,73	309,24715
Master Bedroom	12,76	137,3475
Walk-in closet	4,26	45,85426
GIA (Gross Internal Area)	52,82	568,54



1

FLAT 16
FIRST FLOOR
CENTRAL CORE

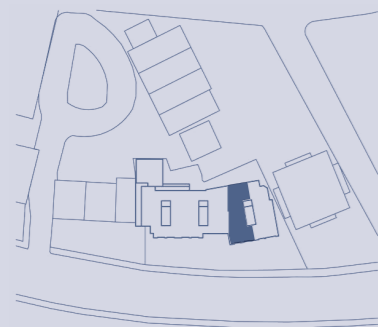


	m2	ft2
Kitchen/ Dining/ Living Room	33,16	356,93127
Single Bedroom	8,77	94,39949
Master Bedroom	13,39	144,12876
GIA (Gross Internal Area)	69,18	744,64



1

FLAT 17
FIRST FLOOR
EAST CORE



	m2	ft2
Kitchen/ Dining/ Living Room	42,63	458,86
Double Bedroom	11,65	125,39
Master Bedroom	11,44	123,13
GIA (Gross Internal Area)	80,45	865,95

NORTH



ARMONIA COURT

1

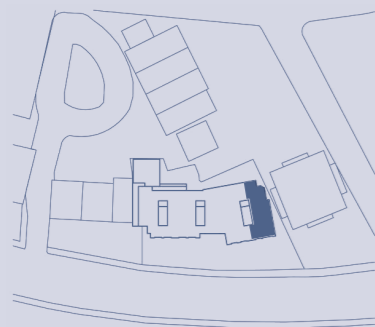
FLAT 17
FIRST FLOOR
EAST CORE



1

FLAT 18 FIRST FLOOR

EAST CORE



	m2	ft2
Kitchen/ Dining/ Living Room	41,77	449,60
Double Bedroom	11,48	123,56
Master Bedroom	12,91	138,96
GIA (Gross Internal Area)	79,95	860,57

NORTH

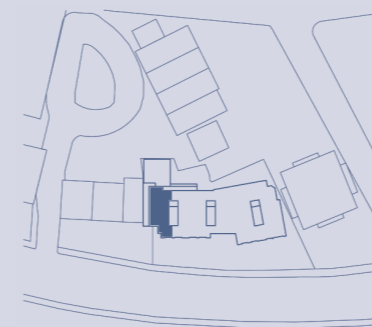


ARMONIA COURT

2

FLAT 19 SECOND FLOOR

WEST CORE



	m2	ft2
Kitchen/ Dining/ Living Room	32,14	345,95
Single Bedroom	9,10	97,95
Master Bedroom	11,92	128,30
GIA (Gross Internal Area)	62,17	669,19

NORTH

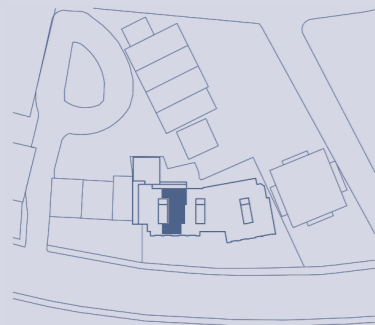


ARMONIA COURT

2

FLAT 20 SECOND FLOOR

WEST CORE



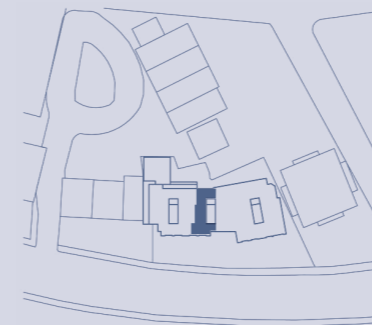
	m2	ft2
Kitchen/ Dining/ Living Room	30,11	324,10
Single Bedroom	7,42	79,86
Master Bedroom	14,16	152,41
GIA (Gross Internal Area)	63,77	686,41



2

FLAT 21 SECOND FLOOR

CENTRAL CORE

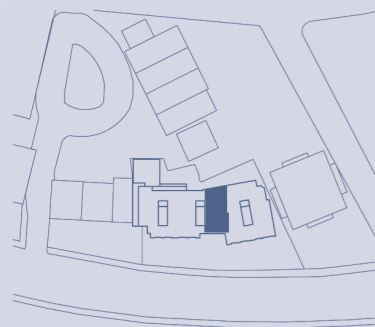


	m2	ft2
Kitchen/ Dining/ Living Room	28,73	309,24715
Master Bedroom	12,76	137,3475
Walk-in closet	4,26	45,85426
GIA (Gross Internal Area)	52,86	568,54



2

FLAT 22
SECOND FLOOR
CENTRAL CORE



	m2	ft2
Kitchen/ Dining/ Living Room	33,16	356,93127
Single Bedroom	8,77	94,39949
Master Bedroom	13,39	144,12876
GIA (Gross Internal Area)	69,18	744,64

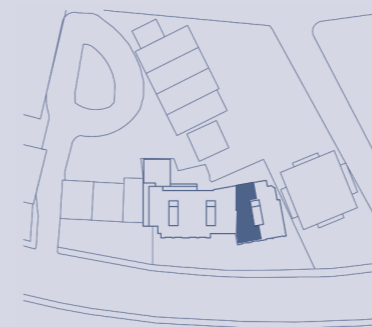
NORTH



ARMONIA COURT

2

FLAT 23
SECOND FLOOR
EAST CORE



	m2	ft2
Kitchen/ Dining/ Living Room	42,63	458,86
Double Bedroom	11,65	125,39
Master Bedroom	11,44	123,13
GIA (Gross Internal Area)	80,45	865,95

NORTH



ARMONIA COURT

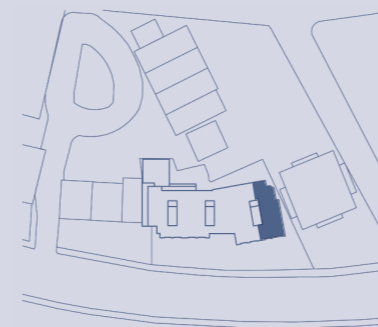
2

FLAT 24
SECOND FLOOR
EAST CORE



2

FLAT 24
SECOND FLOOR
EAST CORE



	m2	ft2
Kitchen/ Dining/ Living Room	41,77	449,60
Double Bedroom	11,48	123,56
Master Bedroom	12,91	138,96
GIA (Gross Internal Area)	79,95	860,57

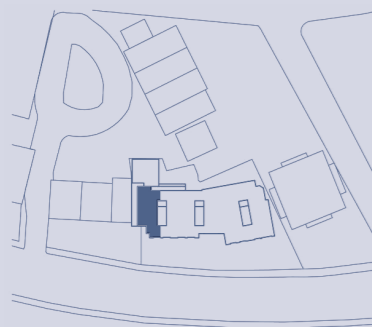
NORTH



3

FLAT 25 THIRD FLOOR

WEST CORE



	m2	ft2
Kitchen/ Dining/ Living Room	32,14	345,95
Double Bedroom	9,10	97,95
Master Bedroom	11,92	128,30
GIA (Gross Internal Area)	62,17	669,19

NORTH

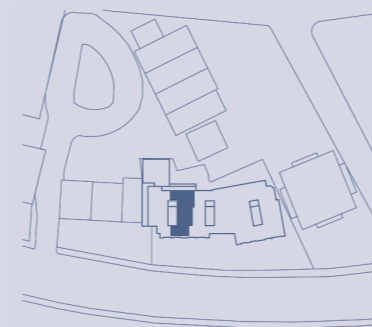


ARMONIA COURT

3

FLAT 26 THIRD FLOOR

WEST CORE



	m2	ft2
Kitchen/ Dining/ Living Room	30,11	324,10
Single Bedroom	7,42	79,86
Master Bedroom	14,16	152,41
GIA (Gross Internal Area)	63,77	686,41

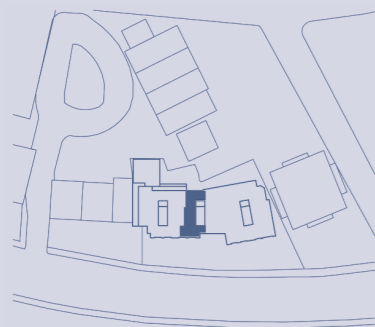
NORTH



ARMONIA COURT

3

FLAT 27
THIRD FLOOR
CENTRAL CORE



	m2	ft2
Kitchen/ Dining/ Living Room	28,73	309,24715
Master Bedroom	12,76	137,3475
Walk-in closet	4,26	45,85426
GIA (Gross Internal Area)	52,82	568,54



3

FLAT 28
THIRD FLOOR
CENTRAL CORE

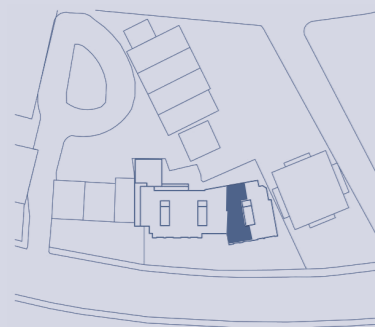


	m2	ft2
Kitchen/ Dining/ Living Room	30,11	324,10
Single Bedroom	7,42	79,86
Master Bedroom	14,16	152,41
GIA (Gross Internal Area)	63,77	686,41



3

FLAT 29
THIRD FLOOR
EAST CORE



	m2	ft2
Kitchen/ Dining/ Living Room	42,63	458,86
Single Bedroom	11,65	125,39
Master Bedroom	11,44	123,13
GIA (Gross Internal Area)	80,45	865,95

NORTH



ARMONIA COURT



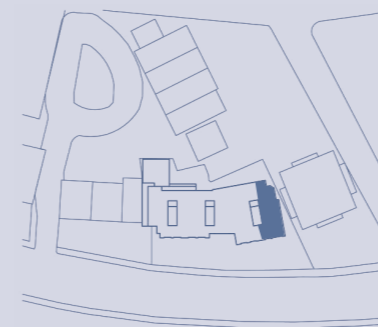
3

FLAT 30
THIRD FLOOR
EAST CORE



3

FLAT 30
THIRD FLOOR
EAST CORE



	m2	ft2
Kitchen/ Dining/ Living Room	41,77	449,60
Single Bedroom	11,48	123,56
Master Bedroom	12,91	138,96
GIA (Gross Internal Area)	79,95	860,57

NORTH





